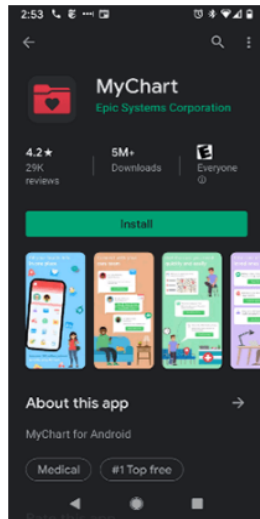
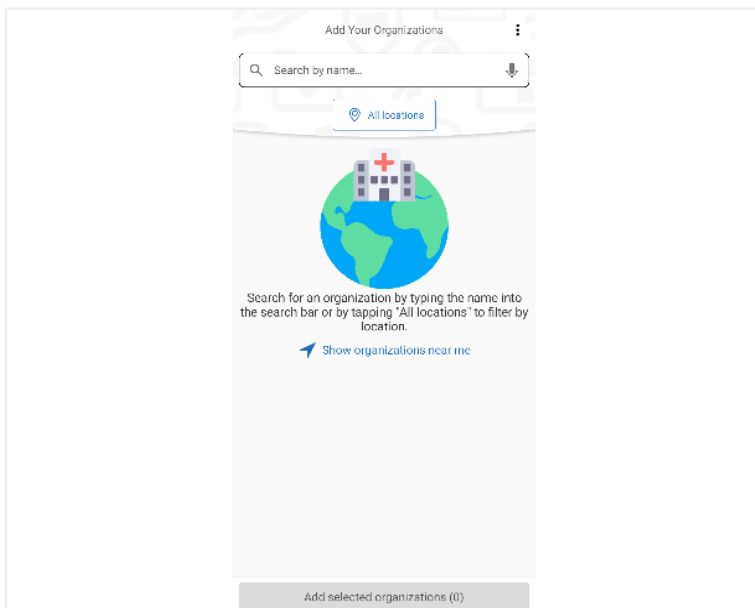


How to Login to MyChart without an Activation Code



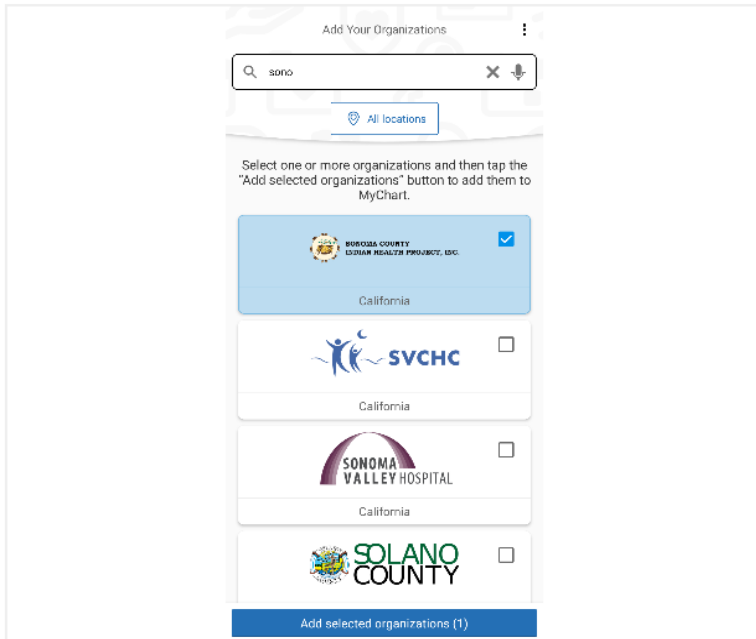
1

Search for the MyChart app from Epic Systems Corporation in your app store. The Logo is a red folder with a heart.



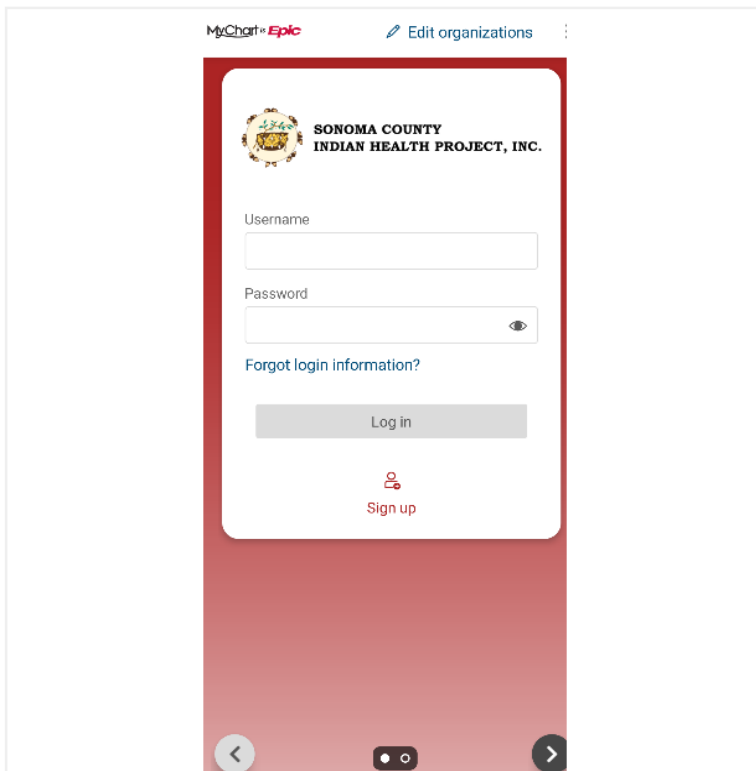
2

Once downloaded, you can search for our Sonoma County Indian Health Project Inc by typing in the search field.



3

Once Sonoma County Indian Health Project pops up, you will select the check box and then click the "add selected organizations" button.



4

Once you have added Sonoma County Indian Health Project as an organization, you will be prompted to log in. If you have already created an account with us, you may enter your credentials. If you need to create an account, click on the "sign up" button.

Sign Up With An Activation Code

Step 1

All fields are required.

* MyChart activation code

Enter your activation code as it appears on your enrollment letter or After Visit Summary®. Your code is not case sensitive.

xxxxx - xxxxx

* ZIP code

xxxxx

* Date of birth

Enter your date of birth in the format shown, using 4 digits for the year.

mm / dd / yyyy

No Activation Code?

[Sign up with your information](#)

Next

5

If you have been given an activation code by a member of our staff, you can begin the sign up process using that code.

If you have not received an activation code, you can sign up by verifying your user information.

Sign Up

Follow these steps to sign up for a MyChart account.

- Enter your personal information.
- Verify your identity.
- Choose a username and password.

Indicates a required field

* Indicates a required field.

Name

* First name

Middle name

* Last name

Address

Country

United States of America

Street address

City

State

ZIP

County

6

Begin to fill out the required information.

Other information

* Date of birth
MM/DD/YYYY

* Legal sex
 Female Male Unknown Nonbinary

X

* Last four digits of SSN


* Email address

* Verify email address

Home phone

Mobile phone

As a spam prevention measure, complete the CAPTCHA below.

I'm not a robot 

Next

7

Continue to fill in all required fields. If the information does not match what we have on file exactly, you will be unable to create an account and will need to request an activation code from our front desk staff.

1:45 73%

Verify Your Identity

You will now be required to enter a one-time use security code to verify your identity. [Learn more](#)

How would you like to receive your code?

Text to phone

Send to email

[Terms and Conditions](#)

[Privacy Policy](#)

2:50 71%

Verify Your Identity

We've sent a security code to [redacted].org. [Learn more](#)

Please enter your code below to continue:

Didn't receive your code?
[Resend code](#)

8

Once your information is confirmed, you will be prompted to request a one-time use security code sent to your email or cellphone.

Sign Up✕ ⋮

Hello, ██████ Choose a Username & Password

All fields are required.

Create a MyChart username. You will have to contact your clinic if you ever need to change it, so think of one that is secure and easy to remember.

* MyChart username

Create a password. Your password must be different from your MyChart username. For increased security, use a combination of numbers and letters (lowercase and uppercase).

* Password


* Retype password

Next

9

Once you have entered your verification code, you will be prompted to choose a User name and Password.

Terms and Conditions



**SONOMA COUNTY
INDIAN HEALTH PROJECT, INC.**

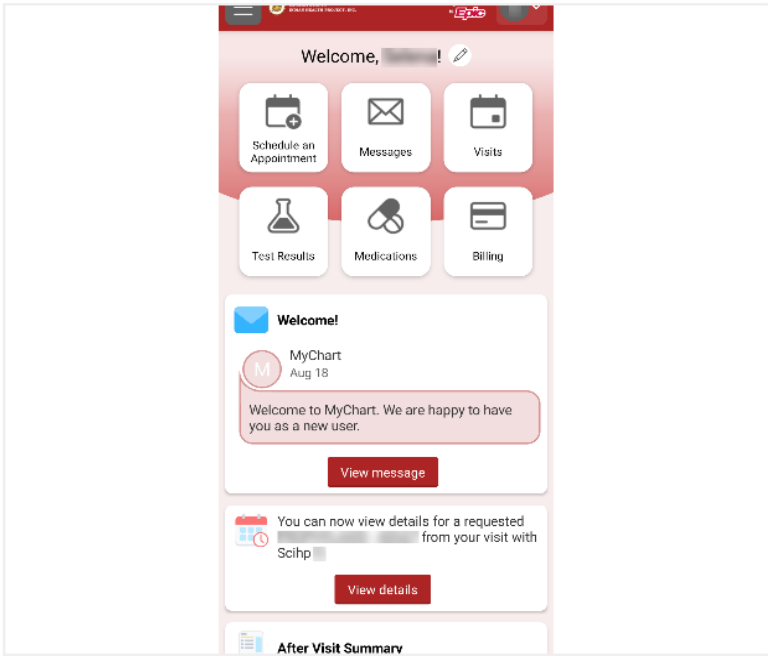
By tapping Accept, you agree to the [Terms and Conditions](#) for Sonoma County Indian Health Project.

Accept

Decline and log out

10

Once your account is created, you will be prompted to accept the Terms and Conditions for using MyChart.



11

You have now successfully logged in and can use MyChart to refill medications, review lab information, and message your provider!

Please remember that MyChart is not to be used for emergency situations. If you have a medical emergency, please call 911.